

modular kitchen

Introduction

Kitchen is the most intricate and captivating space in the house, a place where culinary, top-notch materials, modern technologies and socializing all come together.

Metercube has always responded to this complexity by fusing technical accuracy with practicality and melding shape and space innovation, culminating in a collection that is not just tools and furniture but rather a novel concept for cooking and living spaces. Our advancements anticipate the evolution of cooking space, all while preserving design ethos that welcomes transformation. This allows us to uphold the timeless traditions while refining functions, materials, forms and everyday living areas.

Form and function, aesthetic and value, luxury and pragmatism - we incorporate multitudes in our design. As diverse kitchen designers, we are inspired by the movements in art and culture throughout the world. As a customer-centric company, our ever-lasting source of inspiration is the client. We are driven by our commitment to fit the individual style, tastes, and personality and transform it into a space that is loved.

INTRO
DUC
TION

modular kitchen

Index

Contemporary	01
Urban	29
Elegant	41
Accessories & Organisers	51
Appliances	61
Finishes	67



CON TEMP OR ARY

Contemporary

Minimalist, neutral colour palettes and metallic accents.
These contemporary kitchens have a subtle elegance that will always suit your style.

They combine elements of modern design with other styles, such as traditional and industrial, to create a contemporary and sleek look. A pop of colour whether it's on the furniture, in a bowl of fresh fruits, or bunch of flowers ensures that your kitchen designs feel warm and embracing.

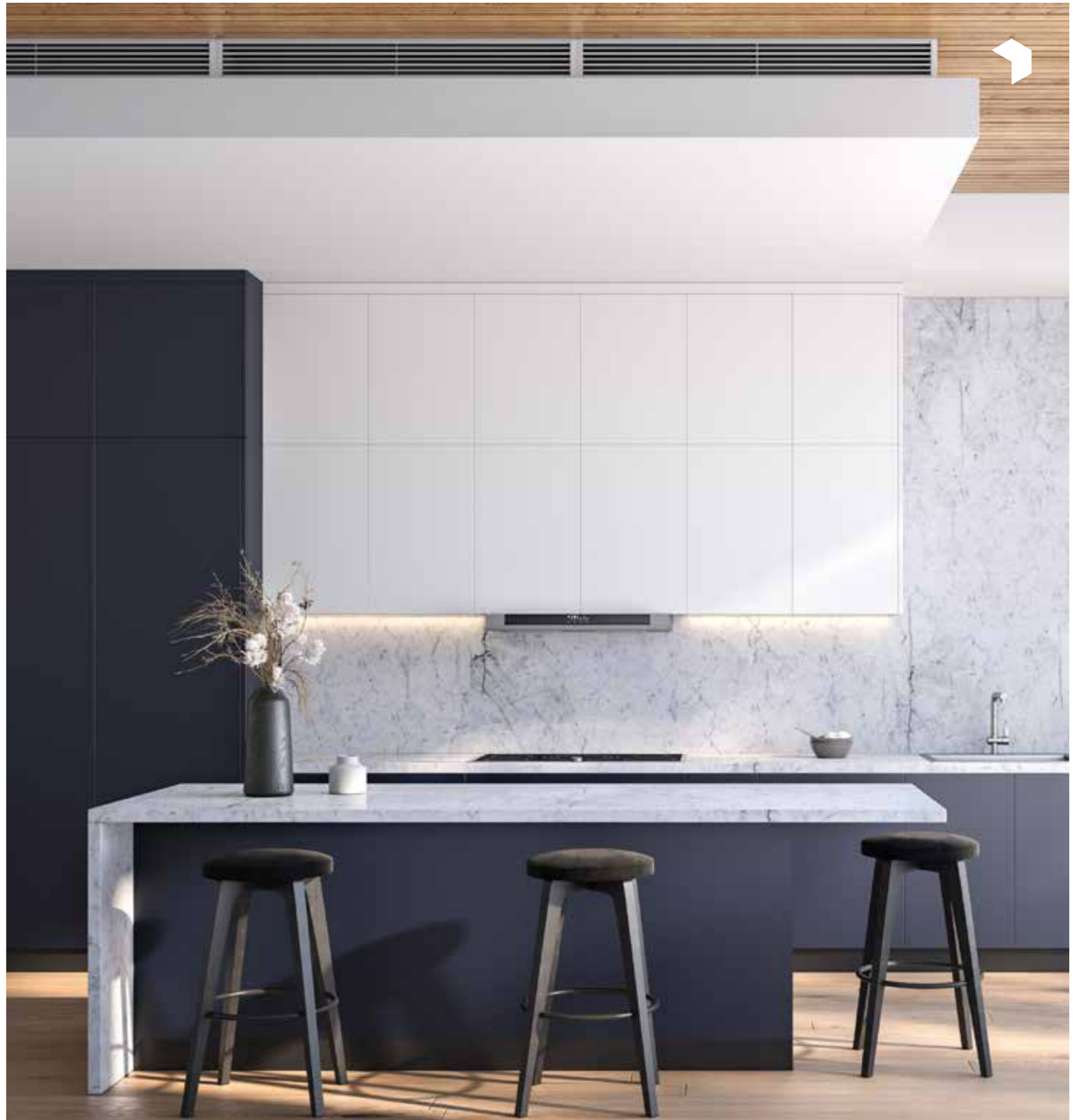






The attention to design, the continuous research for quality materials, the comparison, the study, the reliability and the functionality contained in each project makes each product an innovative result that combines tradition with technology.

The passion and experience of Metercube kitchens is dedicated to your way of living and of being together. Kitchen is the ideal environment in your home, the place to experience everyday emotions.







Features are customized to your preferences without sacrificing aesthetics to ensure regular wellness, this model re-defines quality, making the kitchen ambiance more social and effective.



A kitchen that tackles the theme of essentiality by offering a new answer to the question of functionality. The rigorous flat door, the very modern taste of the woods, the brilliant reflections of modernity of the glossy lacquers, the futuristic elegance of the matte lacquers and the material effects.



Ergonomics, functionality and optimization of spaces. These are the characteristics that make the internal equipment the strong point of a kitchen that is perfect in every detail. High quality of material guarantees stability, smoothness of movement and high resilience.

The wide range of products offered allows you to configure every single element of the kitchen according to your needs.







Even in the use of materials, alternation is the focus of every choice; natural stones of the worktops that interact with the wooden shutters and the black aluminum that make up the structure.

A timeless kitchen reinterpreted in a contemporary way to make everyday domestic life more welcoming.



Designers consider the tall units as one stop solution for saving space. Concealed appliances in one unit means ample amount of counter clearance.





Most of the counter space in modular kitchen is occupied by cluttered electronic appliances. *Metercube* kitchens are engineered with tall cabinets dedicated for such appliances which will be concealed and placed for a hassle free usage.





UR B AN

Urban

Urban Kitchen is an evolving design trend and is destined to become pervasive in no-time. Sleek and refreshing is a vibe that one prefers when planning a kitchen; Urban kitchen embodies that approach very well.





Urban kitchen is the best fit for the most up-to-date technologies. After all, urban design is as much about efficiency as it is about aesthetics, pairing cosmopolitan designs with equally advanced appliances.

Integrated electronics and smart appliances are all the rage with urban kitchen designs, reflecting the city-dweller's need for top-level efficiency and on-trend homeware.







Long gone are the days when kitchens were an enclosed room in your house. The best of urban kitchen designs is an explosion of openness for families that do not consider cooking to be a chore, but rather a fun activity to share.



Raw and rusty, yet sleek. Take cues from our cutting edge design to uplift your kitchen game. The Urban kitchen stands out by its dramatic volumes and clean lines. A plan that makes the space the sole protagonist by incorporating it into the design. The kitchen features a curated combination of fine materials and well planned utilization of any given space.



Urban chic is achieved by combining textures such as monochromatic or vibrant colourful high-gloss lacquer and industrial-chic shades. A broad spectrum of finishes merged with your personal choices create a true urban look.

Spacious and open-plan stretches out as lounge and dining area, whereas compact space acts purely as a place to store supplies.





ELEGANT

Elegant

Amalgamation of elegance and class balanced with diverse elements. Timelessness to modernism is a fusion of brilliance put together in design to suit the ergonomic needs and maximality in usage.





Timeless neutrals and simple lines make an elegant design for kitchen spaces. Monochromes and subtle shades of wood with quartz countertops on similar shades of neutrals is a stellar combination. To top it off with anthracite shade of sink and faucet will complete the essence of the elegant theme.

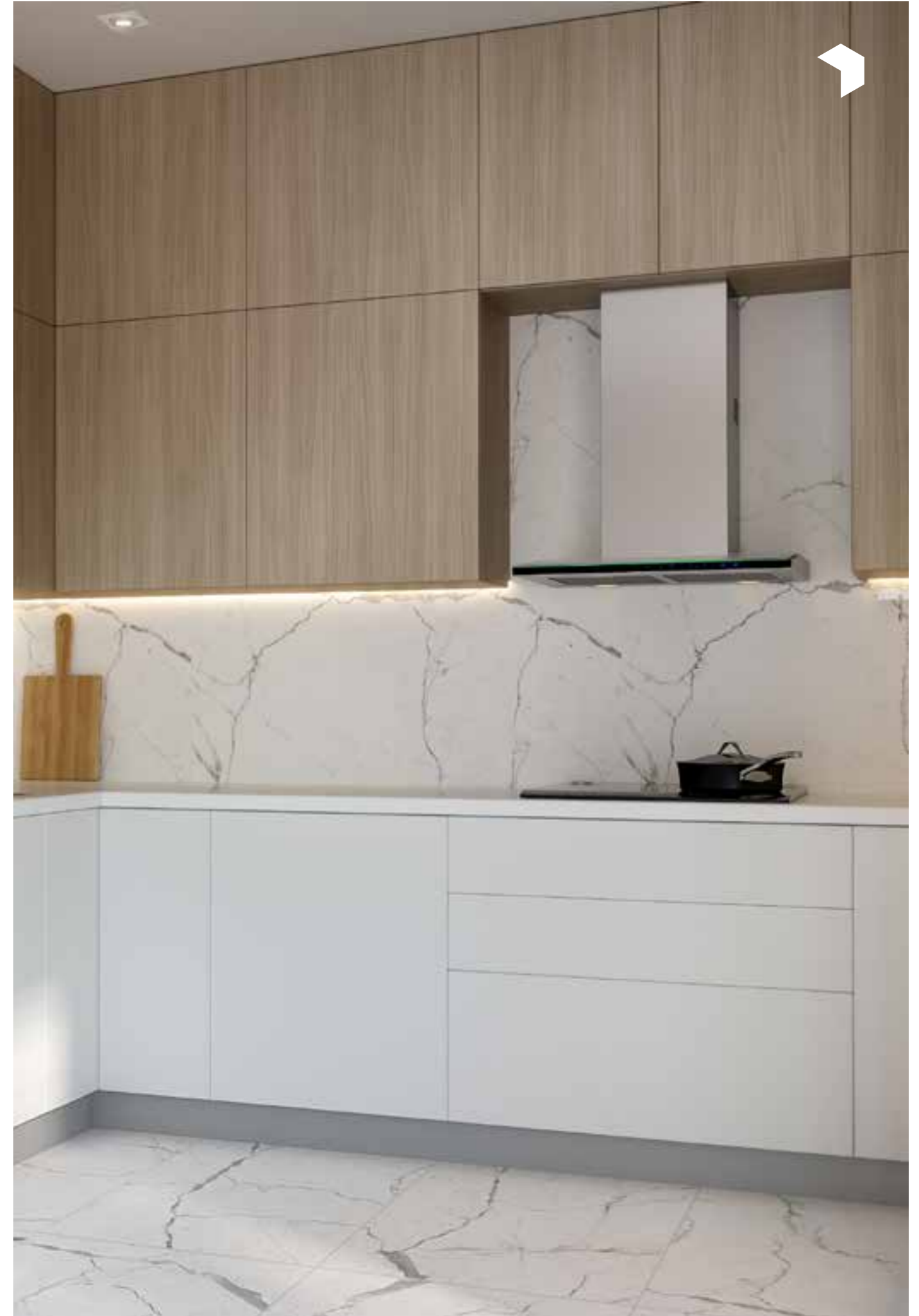
All the cabinets planned with specific intention for apt functional usability, carefully designed to meet the standards of efficient work triangle.





This kitchen provides a plethora of configuration and customisation options, with a range of tastes from refine and minimal to rich and original.

It is a style that rediscovers the value of classic furnishing solutions but retains the modernity of its functions. Its wide selection of colours ensures that it is unrivalled.



The lines become thinner like the profiles of the doors which almost diminishes by designing new proportions. Quality finishes and attention to detail, all elements that characterize *Metercube* kitchens.



The choice of finishes is wide both for the worktop and for the structure, allowing it to adapt to all styles.





Accessories & Organisers

Metercube kitchen accessories and organisers are the core elements to keep the cabinets in place and to add character to the units, that otherwise would be just bare storage spaces.

AC
CES
SOR
IES &
ORG
ANI
SERS





- 1 Sink
- 2 Bottle Pull Out
- 3 Cutlery Organiser



Accessories define the purpose of a particular cabinet be it a cutlery organizer, adjustable shelves or soft closing carousels. It is a whole package that makes it look and work seamlessly and efficiently.

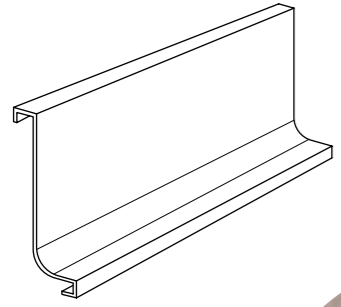
- 1 Sink
- 2 & 3 Tandem Drawers



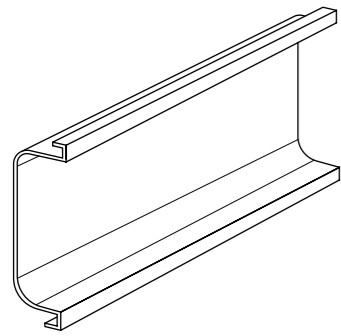
- 1 Magic Carousel
- 2 Corner Carousel
- 3 Wire Basket
- 4 Corner Carousel

Gola Profiles

L - Type Gola Profile



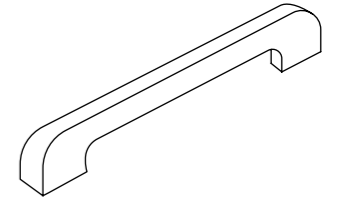
C - Type Gola Profile



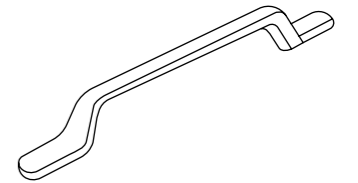
Handles



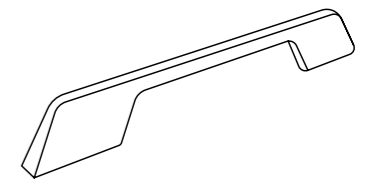
Liva Handle, CAH
96 mm | 160 mm | 192 mm | 320 mm



Liva Handle, MZH
96 mm | 128 mm | 192 mm



Liva Handle, C5AH
128 mm | 224 mm | 352 mm





Appliances

A delicious meal can only be prepared by a person who is happy and comfortable working in the kitchen.

Modern kitchen appliances not only save your cooking time but also helps you master new dishes with ease and lets you multitask and keep your kitchen clutter free.



AP
PLI
AN
CE
S



Chimney

Choose from our collection of Chimneys from Hafele and Elica

Hafele
Regen Isola 90
Island Chimney
900 mm



Hafele
Teresa 60
600 mm



Elica
EFL-S601 HAC VMS PLUS
600 mm



Elica
WDAT HAC 60 NERO
600 mm



- 1 Chimney
- 2 HOB

HOB

Choose from our collection of HOBs from Hafele and Elica

Hafele
Vortex 480
800 mm x 520 mm



Hafele
Zeta Plus 590
900 mm x 520 mm



Elica
Classic Flexi AB HCT 3B 60
690 mm x 590 mm



Elica
Flexi AB HCT 470 DX
700 mm x 520 mm

Sink and Faucet

Choose from our collection of Sinks and Faucets from Franke and Hafele.

Hafele
Naya 6, 6 colours
620 mm x 510 mm x 200 mm



Hafele
Astral Single bowl SS finish
530mm x 460mm x 200mm



Franke
RSX 610-63
620mm x 470mm x 220mm



Franke
UGB 611/211-100 3 1/2" WWK REV WRO TH ON
1000mm x 500mm x 200mm



Carena S



Mili



Microwave and Oven

Choose from our collection of Microwave and Oven

Hafele
Oven - Diamond Neo 70



Hafele
Oven - Ribb 70



Hafele
Microwave - Iris 28



Hafele
Microwave - Aida 28



3 Microwave

4 Oven

3

4

Refrigerator

Choose from our collection of Refrigerators



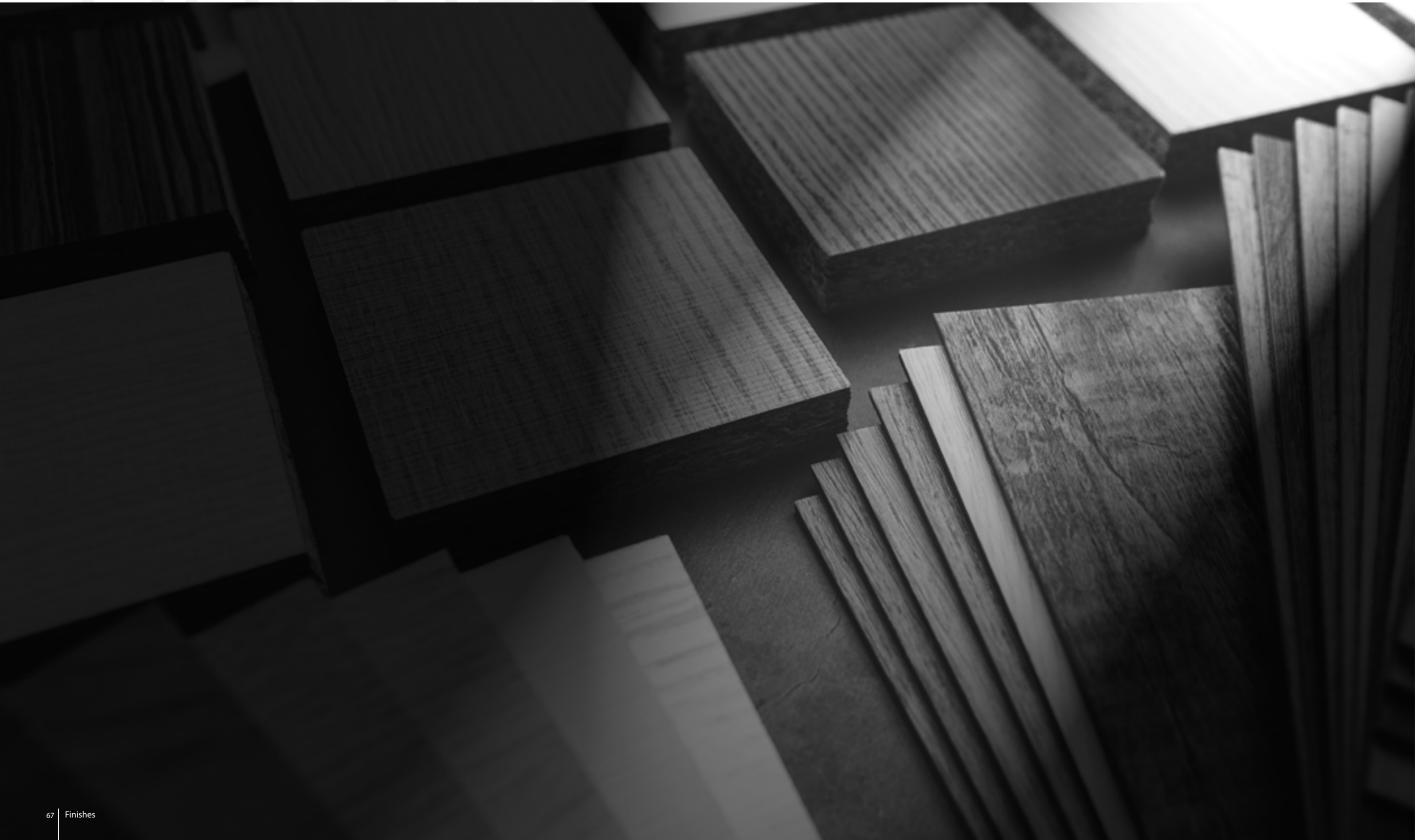
Hafele
Refrigerator
NR300NF



Hafele
Refrigerator
HRC300NF

FINISHES

Finishes





Laminates - Matt



Shire Mono Teak



Magas Walnut Bronze



Adriatic Blue



Autumn Leaf



Black Current



Jolly Green



Magus Mystique Walnut



Praire Green



Shangrila



Winter Sea



Hazel Cambric



Canadian Walnut



Chalky Navora Teak



Cinnamon Oak



Canterbury Kaos Oak



Golden Campino



Pabelo Acacia Exodus



Montana Walnut



Misty Grey



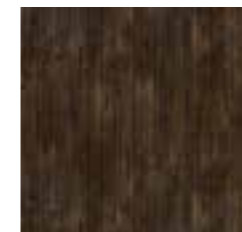
English Ivy



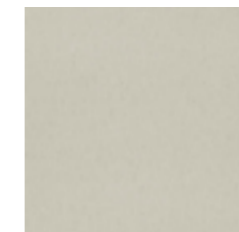
Sunflower



Pebble Grey



Rustic Dreams



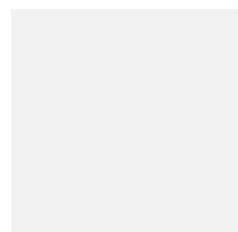
White Cambric



Ethnic Denim Splash



White Pabelo Acacia



Arctic White



Trooper



Livid Krakato



Cappuccino



Laminates - High Gloss



Champagne Plush



Amber Brown



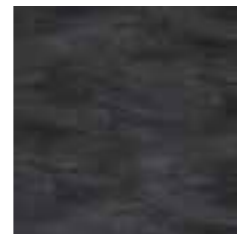
Cocoa Plush



Snow White

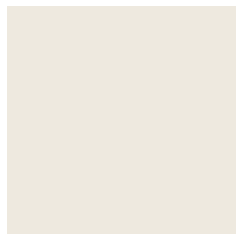


White Marble

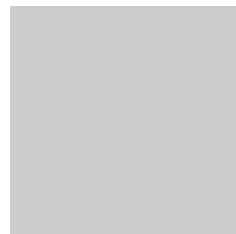


Stone Grey

Polyurethane



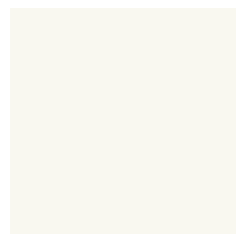
Pure White



Light Grey



Light Ivory



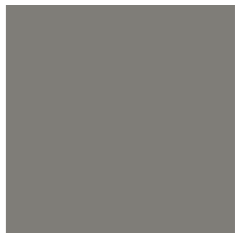
White Duco



Glass



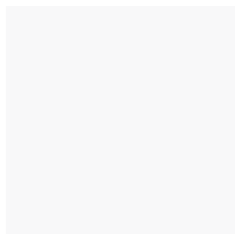
Champagne



Kaffe



Brown Tinted Glass



Clear Glass



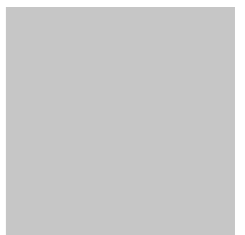
Ivory



Olive Green



Pearl White



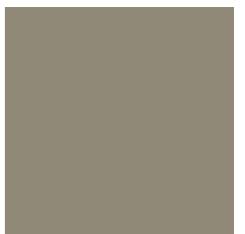
Frosted Glass



Titanium Grey



Grey Tinted Glass



Cupucino



Foil



Beige



Stone Grey



Magic Steel Grey



Antique Pink



Arctic Grey



Lava



Creme White



White



Mother of Pearl



Acrylic



Creme



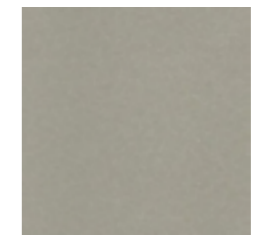
Metalic Silber



Metalic Anthrazite



Meta Oxyd



Mettalic Kubanite



Matt Blue



Matt Anthrazite



Matt Kubanite



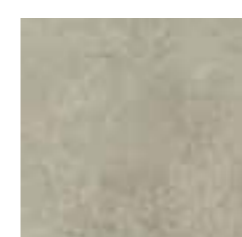
Acrylic - One Skin



Moka Cement



Terracota



Luna



Natural Cement



Brown Cement

Countertops - Quartz



Arctic white



Avalanche



Costa maple



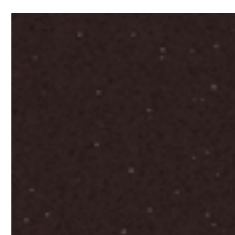
Bianco desert



Bianco maple



Bianco stona



Burgundy maple



Cloudy grey



Costa ivory



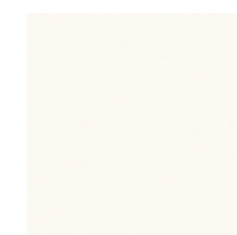
Ginger tan



Graphite



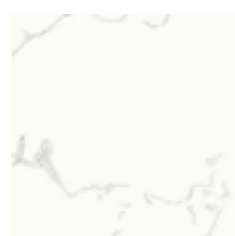
Gres



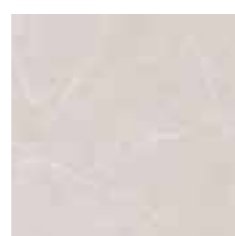
Oasis



Sandal



Satuario



Shadow grey



Shadow White



Shamper white



Vanilla



Venus



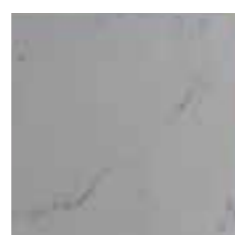
Pure White



Pure statuario



Pure Calacutta



Pure Bianco



Carrara Grigio



Carrara Bliss



Bottega Portofino



Bottega Amalfi



Bottega Verona



Countertops - Granite



Flash Blue



Emerald Pearl



Steel Grey



Black Marquna R



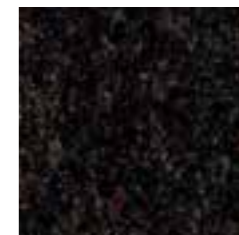
Crystal Brown Polish



Black Galaxy



Black Pearl



Honey Brown



Tan Brown



metercube
inspire. create.

10 YEAR
WARRANTY*

* T&C Applies

The depicted images are only intended for illustration purposes, and there may be variations in the final product. These variations could be due to changes in the layout, the final finishes of the product, exposure to light or the view and several other factors. Additionally, all specifications, plans, and features are subject to modification in the final product and may not be the same. The maps, models, floor plans and other representations are not necessarily to scale or in the location or orientation that they will be in when the product is built.

+91 70228 23594 | +91 80951 04455
stmarks.store@metercube.com

1 SOBHA Mall,
Church Street, Off MG Road,
Bengaluru 560001

+91 81057 88334
experience.store@metercube.com

SOBHA Corporate Office,
Bellandur, Bengaluru 560103

+91 95822 34287
gurgaon.store@metercube.com

C1-2002, SOBHA City, Sector 108,
Gurugram, Haryana - 122017

A SOBHA Enterprise